



SQUIRREL TREE ROAD

SHEPHERD, TEXAS | HARDWOOD & PINE | 90 +/- ACRES



SQUIRREL TREE ROAD



Come enjoy small town living in the East Texas town of Shepherd! This 90.397 acre tract is a natural stand of woods, hardwood & pine, and ready for your homesite. It's easy to relax here, with plenty of shade, peace, and quiet.



Markham Realty
Selling Quality Texas Properties Since 1970
contact@markhamrealty.com
936-295-5989 | markhamrealty.com



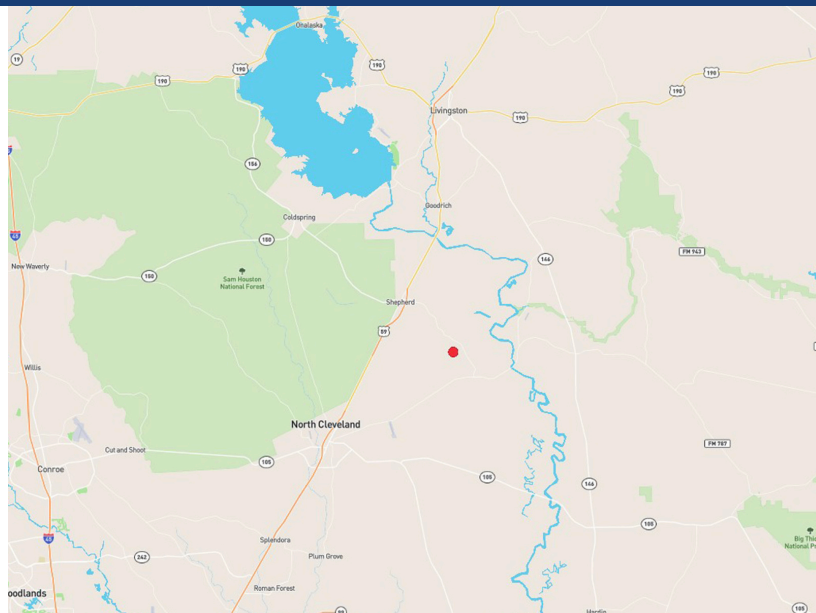
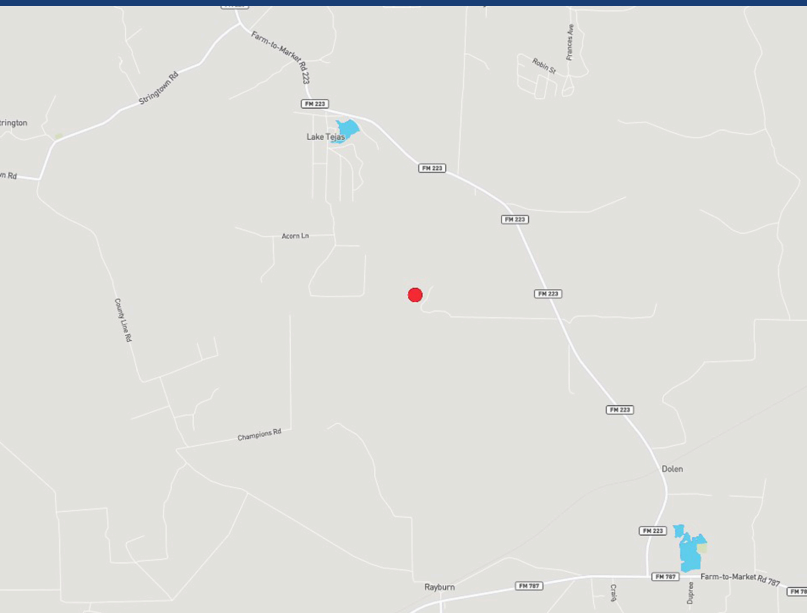
Scan here for additional information & photos.



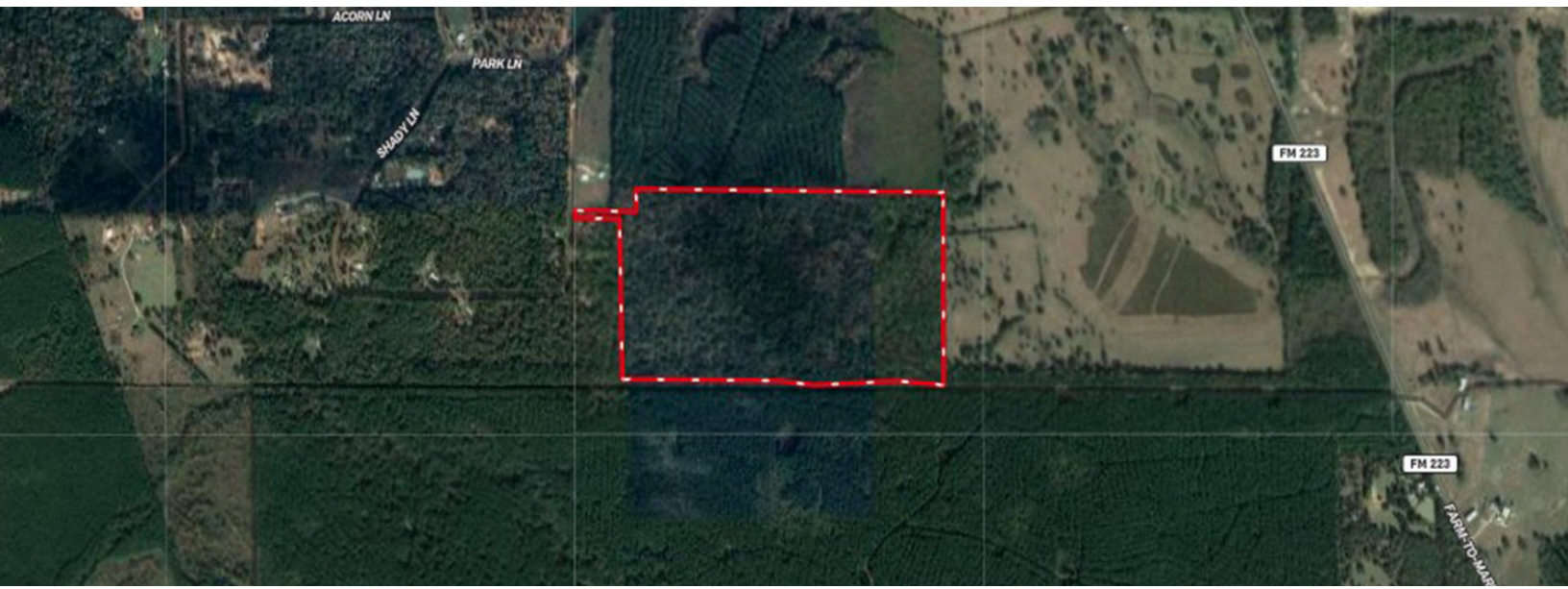
Information furnished is from sources deemed reliable, but is not guaranteed by Markham Realty, Inc. The offerings are subject to change in price, errors, omissions, prior sales, or withdrawal without notice. Square footage, acreage size and lot dimensions are approximate. All persons and firms named in this brochure are licensed brokers or salespersons. Markham Realty, Inc. will co-broker with any licensed Broker if Broker and/or agent accompanies his or her prospective buyer from the first (1st) showing forward.

SQUIRREL TREE ROAD

SHEPHERD, TEXAS



Directions: From Shepherd, take FM 233 East about 5 miles & turn Rt on Midlane Rd. Stay straight on Midlane Rd all the way to property on the Right. (Midlane Rd turns into Shady Lane)



Markham Realty
Selling Quality Texas Properties Since 1970
contact@markhamrealty.com
936-295-5989 | markhamrealty.com



Scan here for additional information & photos.



Information furnished is from sources deemed reliable, but is not guaranteed by Markham Realty, Inc. The offerings are subject to change in price, errors, omissions, prior sales, or withdrawal without notice. Square footage, acreage size and lot dimensions are approximate. All persons and firms named in this brochure are licensed brokers or salespersons. Markham Realty, Inc. will co-broker with any licensed Broker if Broker and/or agent accompanies his or her prospective buyer from the first (1st) showing forward.